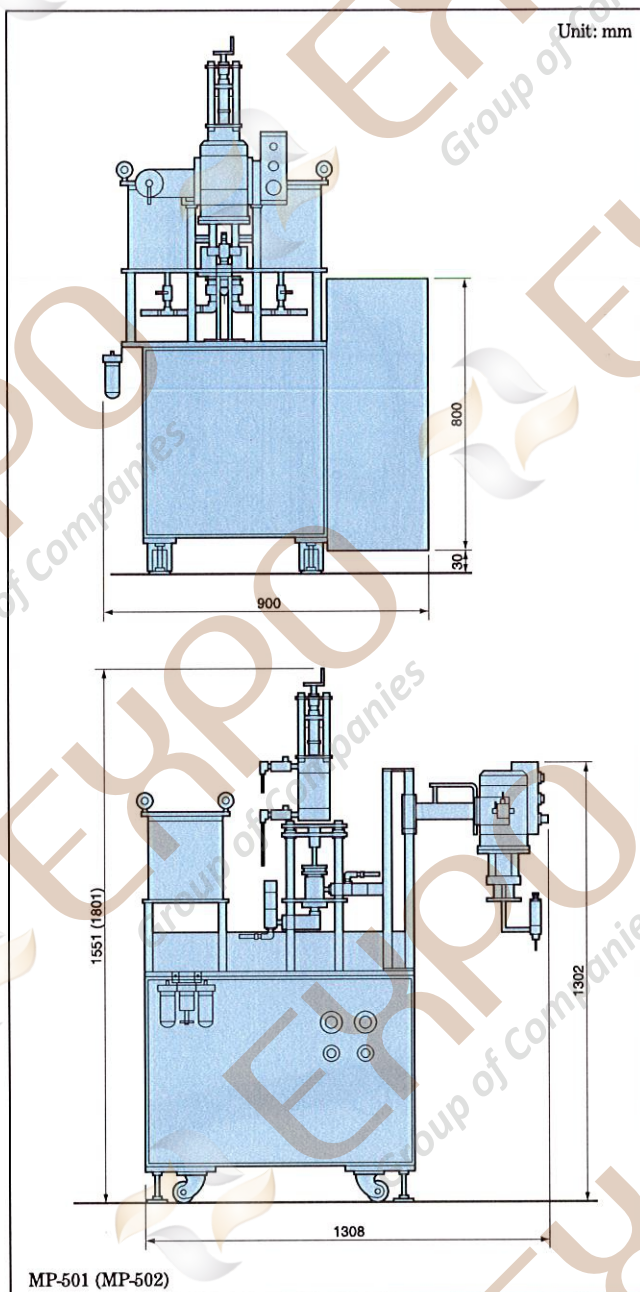


STANDARD SPECIFICATION

	MP-501	MP-502
Output range	1 to 50 ml/shot (Varies with setting ratio.)	1 to 100 ml/shot (Varies with setting ratio.)
Applicable ratio	100:100 to 100:1.5 (Varies with setting ratio.)	
Viscosity	1 to 50,000 mPa·s (High viscosity material may be used by heating)	
Material tank	6-liter open tank (stainless steel)	
Flushing tank	19-liter open tank (stainless steel)	
Mixer	Motor rotary mixer or static mixer	
Output head (valve)	FDV-LWA-V	
Metering system	Volumetric metering (plunger pump)	
Control system	PLC control	
Flushing system	Manual air pressure feed	
Driving system	Air cylinder drive	
External input	No-voltage, contact signal 20 ms or more	
External output	Contact output, maximum capacity 250V AC·125V DC 3 A	
Ambient temp.	0 to 50°C/0.5 MPa	
Air supply	200 V AC 50/60 Hz	
Power supply	0.5 kW 2.5 A / 200 V	
Power consumption	Approx. 200 kg	
Weight		

DIMENSIONAL DRAWING

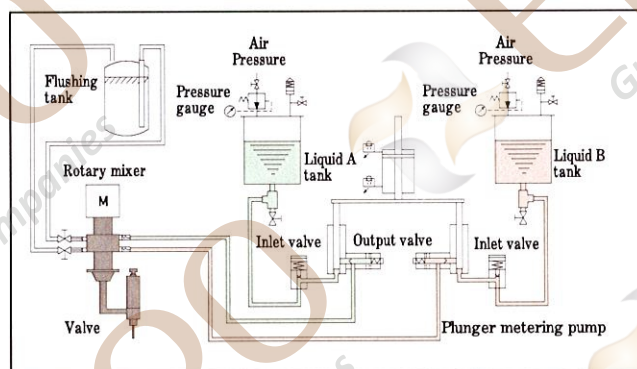


MP-501/502

Plunger Metering Pump 2-component Dispensers

- 2-component Dispensers
- Output Range 1~100 ml/shot
- Viscosity 1~50,000 mPa·s
- Volumetric Metering Plunger Pump
- Motor Rotary Mixer & Static Mixer
- PLC Control

CONSTRUCTION SCHEME



DISPENSING VOLUME PER STROKE BY PULINGER SIZE

Stroke (mm)	(Dispensing volume per pump / Unit: ml)				
	10	25	50	75	100
Plunger size					
ø6	0.28	0.70	1.41	2.11	2.82
ø10	0.78	1.96	3.92	5.88	7.85
ø15	1.76	4.41	8.83	13.24	17.66
ø20	3.14	7.85	15.70	23.55	31.40
ø26	5.30	13.26	26.50	39.79	53.06

Maximum stroke: MP-501: 50 mm / MP-502: 100 mm

- * Design and specifications are subject to change without prior notice.
- * For details of the products and services, consult with the nearest sales office.
- * Printed by DTP color laser printer. Product color may differ from those shown in this catalog.

Developing the future technology of liquid handling
NLC Naka Liquid Control Co., Ltd.

Head Office/Factory: 2-18-1 Dainichi-cho, Moriguchi-shi, Osaka 570-0003 Japan Tel. 06-6905-1391 Fax. 06-6903-8069
Singapore Office: 50 Bukit Batok St. 23 #04-11 Midview Building Singapore 659578 Tel. 65-6268-5911 Fax. 65-6268-2170
Thailand Office: 9/65 Moo 19 Phachayothin Rd., Thumho Klongnueng, Amphur Klongluang Phatumthai Thailand 12120
Tel. 02-909-5865 Fax. 02-909-5884

<URL> <http://www.nlc-dis.co.jp> <E-mail> nlc@nlc-dis.co.jp

Printed in Japan



Capable of continuously processing liquids with wide range of viscosity. Highly versatile dispenser to meet various customers' needs.

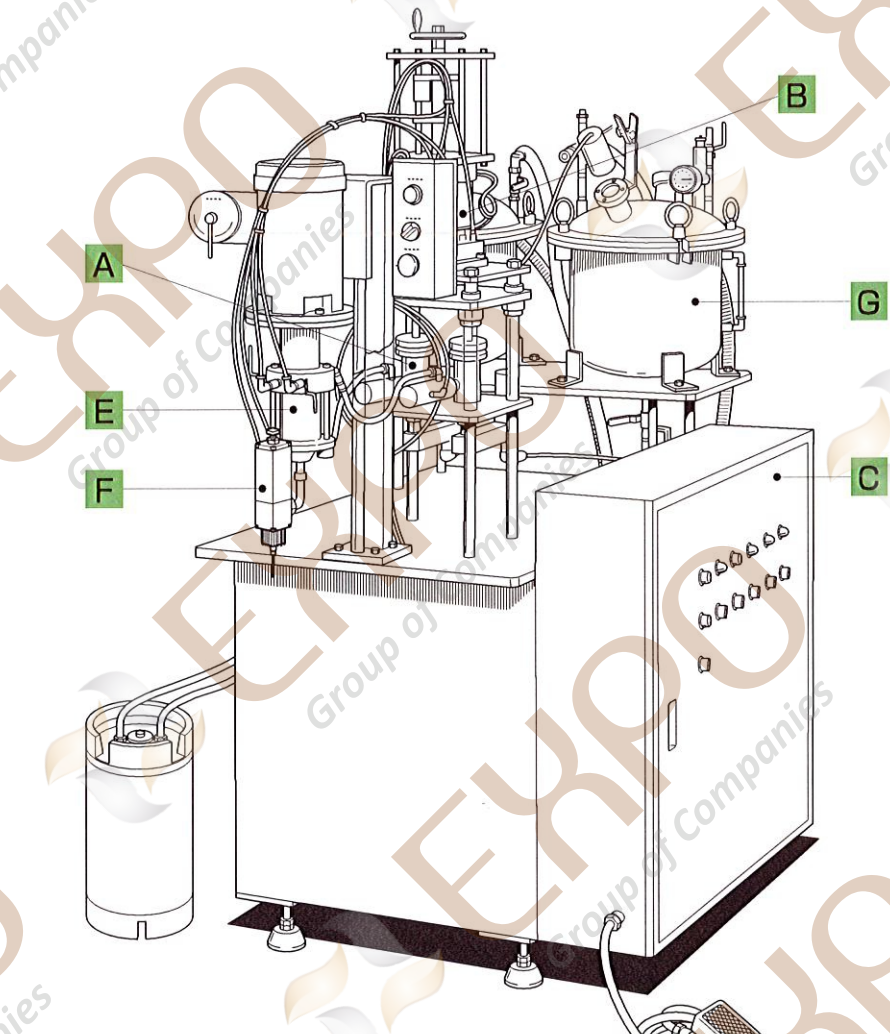
Plunger Metering Pump 2-component Dispensers

MP-501/502

Dispenser incorporating plunger metering pump for accurate dispensing. Simple structure for easy maintenance.

MP-501/502 incorporates our unique plunger metering pump to meter the ratio of 2 liquids correctly for highly accurate dispensing. It is a 2-component dispenser simply designed with emphasis on functionality. This dispenser handles various material liquids with viscosity ranging from 1 to 50,000 mPa·s, and quickly accomplishes a series of processes - metering, mixing and dispensing. Filler-containing liquids such as silica can be handled without difficulty. Besides, flushing after a job can be performed with ease. It meets needs for a broad range of works from injection/casting up to gluing/sealing, with highly accurate metering and high-efficiency mixing. MP-501/502 proves its merits especially when handling liquids having a very short pot life.

- Simple structure for easy operation.
- Easy flushing after a job and easy maintenance.
- Handles liquids having a shorter pot life.
- Dispensing speed and output volume can be changed and adjusted.
- Supports more various works by combination of options.
- Achieves mix output range of 1 to 100 ml/shot.
- Suitable for introduction of FA line.

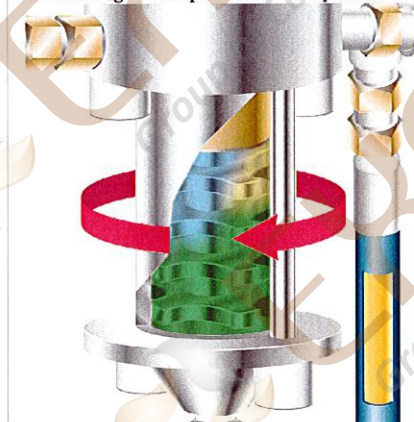


C Controls / Operating panel

Switches necessary for operation are all incorporated in the operating panel. PLC control enables reliable operation with ease. Also, interlocking with robot or automated machinery is enabled, thus supporting introduction of FA system.

E Mixer

High-performance rotary mixing head is essential for dispensing two liquids as a complete mixture. A rotor with blades rotates at a fixed speed to stir the two liquids fed into the chamber. Various chamber rotors are available so that the capacity inside the mixer can be selected according to the specification of liquids used.



As optional accessories, a mixer with converter, which controls rotating speed as desired (60 to 3,000 rpm) and a rotating speed detector (tachometer) can be attached according to the application.

Standard specification

Mechanical seal:	Sintered hard alloy
Main body:	SUS 303
Mixing chamber capacity (ml):	25 / 50 / 75
Rotating speed:	1,750 rpm
Temperature range:	-20 to 120°C

* 2P motor is used for 3,000 to 1,800 rpm.

F Output head

Prevents liquid drippings after dispensing and enables flow rate control via our unique stroke adjustment mechanism.

G Tank

6-liter stainless steel air pressure tanks are used as a standard feature. 10-, 20-, 40- or 60-liter tanks can be selected according to the output volume or mixture ratio.

Adoption of fixed-ratio plunger metering pump brings solution to fluctuation of dispensing volume or ratio.

A Metering pump

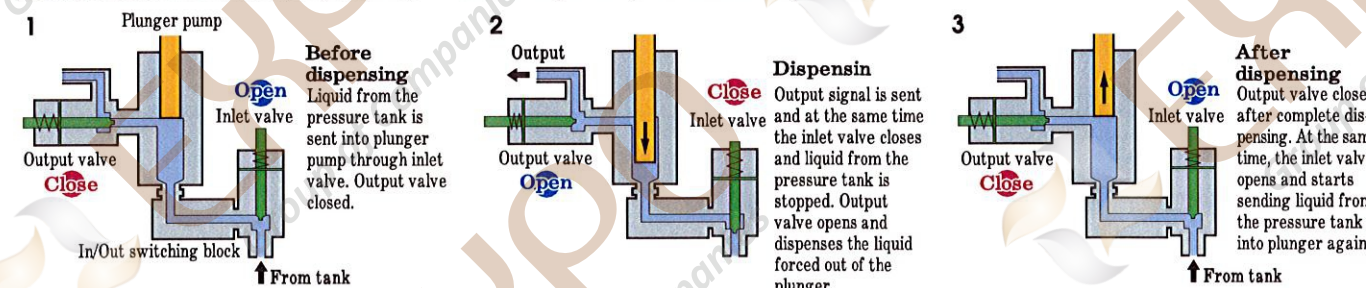
Our unique plunger metering pump is adopted. A wide range of output is available by the selection of pump diameter. The pump supports liquids with various viscosity grades and ensures accurate dispensing regardless of liquid viscosity or temperature. Simple configuration without variable ratio mechanism causes no fluctuation of outputs.

B Output control

Output volume and mixture ratio vary with the application or material liquid. The metering pump calculates the mixture ratio (volume ratio) of base resin and hardener and output volume respectively to determine the pump diameter. This allows liquids to be dispensed with accurate mixture ratio and output volume.

Plunger Metering Pump Minimum to maximum ratio of output setting range is 1:5 for MP-501 and 1:10 for MP-502.

Example: Min.: 10 ml (Max. pump dia.: 26) - Max.: 50 ml (MP-501) - Max.: 100 ml (MP-502)



Main applications / Applicable resins

Most effective in handling liquids having a very short pot life. Supports a wide range of works such as gluing, sealing, injection, casting and insulation.

